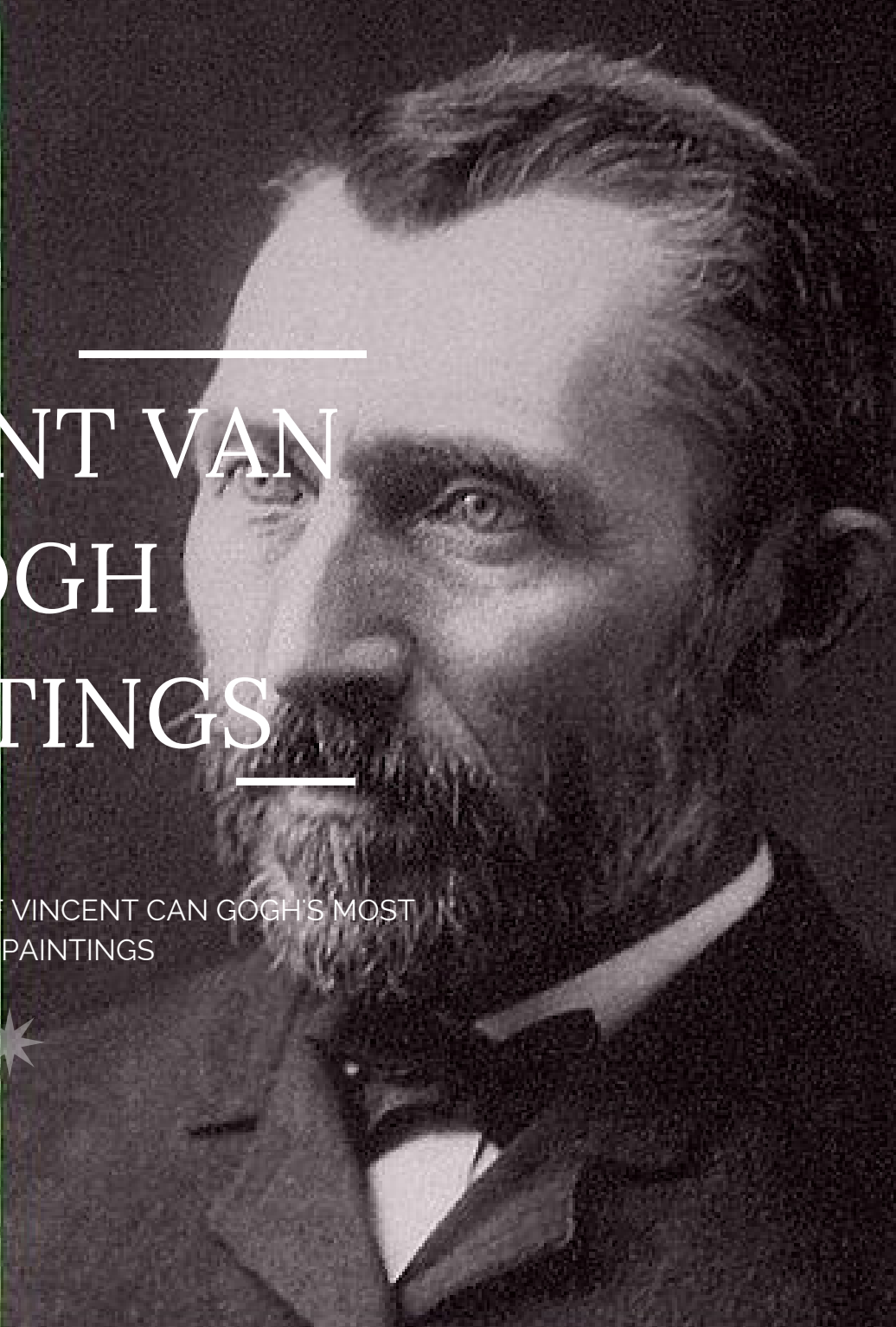
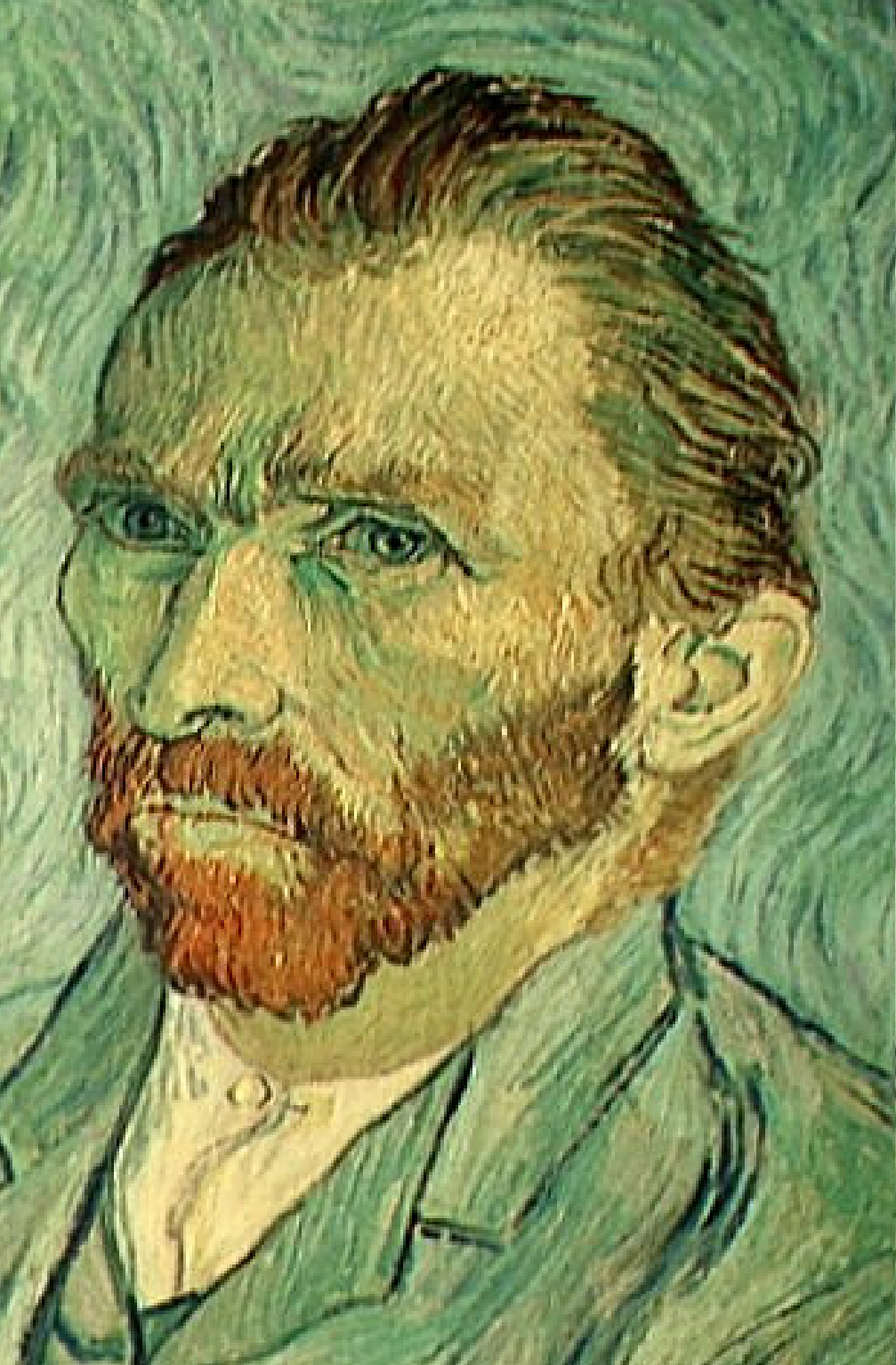


VINCENT VAN GOGH PAINTINGS

A COLLECTION OF SOME OF VINCENT VAN GOGH'S MOST
FAMOUS PAINTINGS





ABOUT VINCENT VAN GOGH

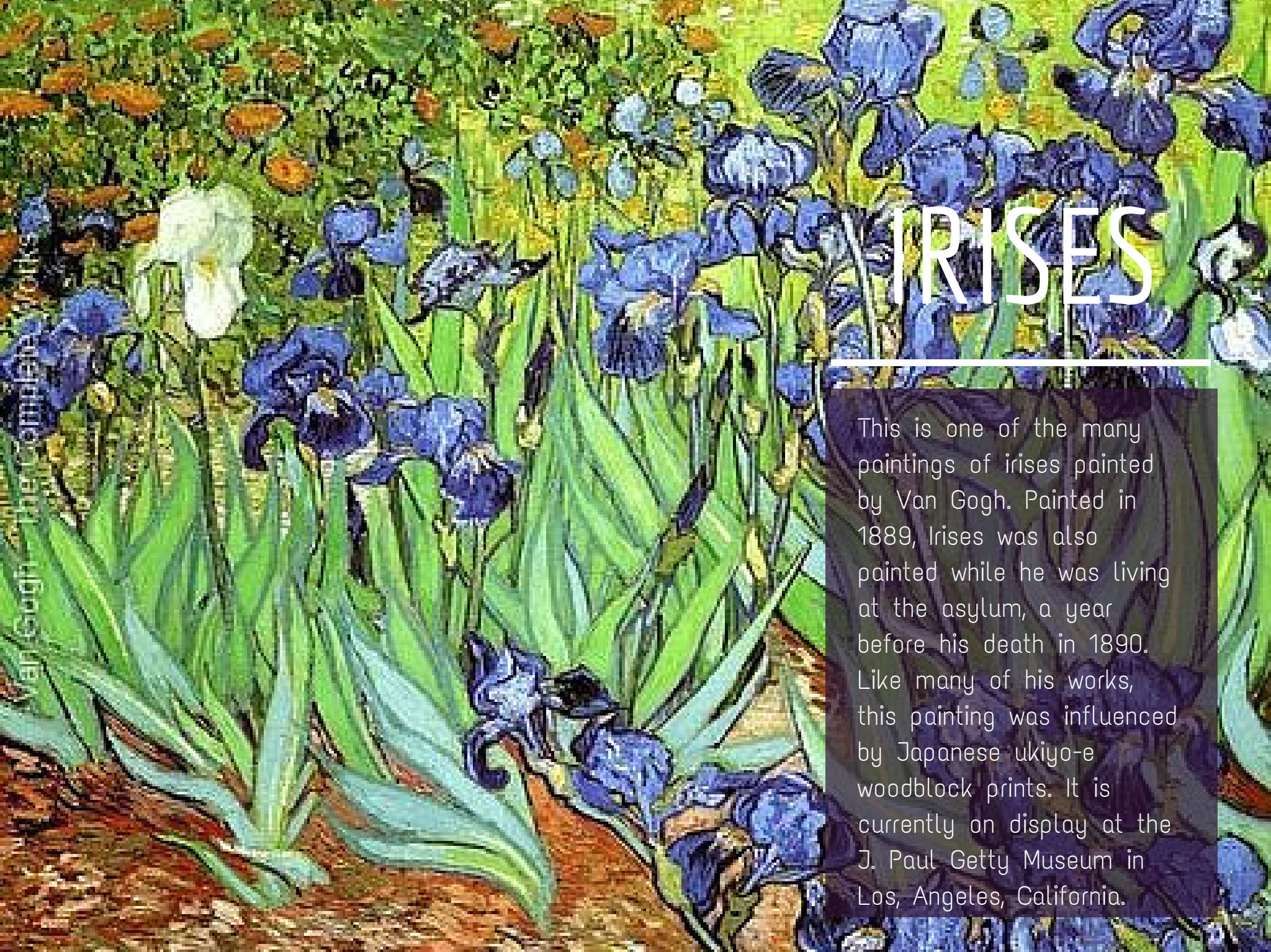
Vincent Van Gogh was born on March 30th 1853 in the Netherlands. He was a Post-Impressionist painter whose paintings have a large influence on 20th century art. Many of his paintings are landscapes, portraits, and self portraits. In just over a decade he created over 2,100 paintings. He passed away at the age of 37 on July 29th, 1880.



The painting 'The Starry Night' by J.M.W. Turner depicts a night scene from an elevated perspective. The sky is filled with vibrant, swirling colors of blue, green, and yellow, with numerous bright, glowing stars. A prominent, dark, jagged cypress tree stands on the left side of the frame. In the foreground, a small town with a prominent church spire is visible, its lights reflecting on the water below. The overall composition is dynamic and expressive, characteristic of Turner's style.

THE STARRY NIGHT

Arguably the most famous painting by Van Gogh, *The Starry Night* (1889) depicts the view from his east-facing asylum room window in France just before sunrise. It is currently part of the permanent collection at the Museum of Modern Art in New York City.



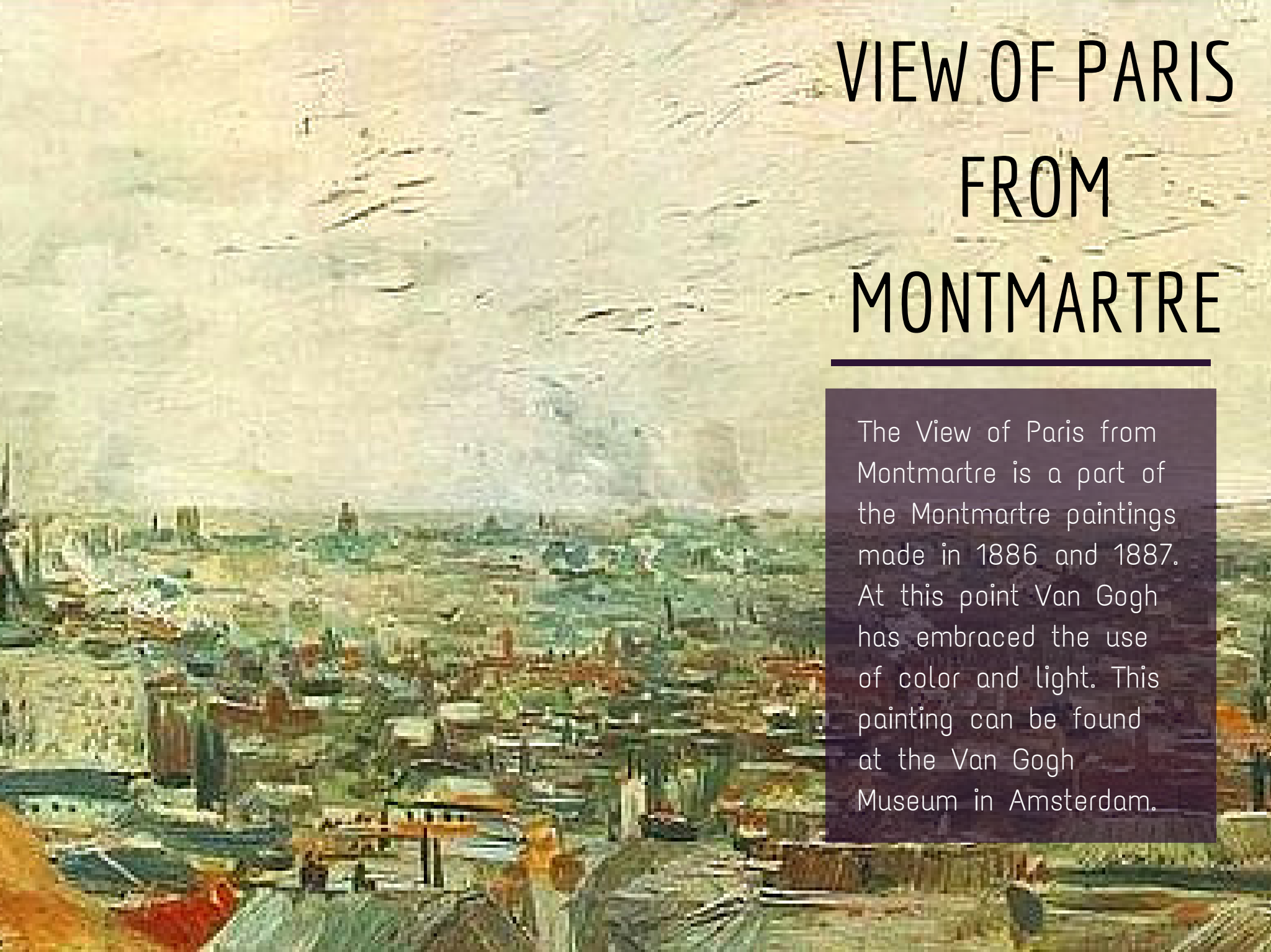
IRISES

This is one of the many paintings of irises painted by Van Gogh. Painted in 1889, Irises was also painted while he was living at the asylum, a year before his death in 1890. Like many of his works, this painting was influenced by Japanese ukiyo-e woodblock prints. It is currently on display at the J. Paul Getty Museum in Los Angeles, California.

The painting 'The Bedroom' by Vincent van Gogh depicts a simple, sparsely furnished room. The walls are a vibrant, slightly blue-green color. A large window on the left wall looks out onto a bright, sunny day. In the center, a wooden bed with a high headboard and footboard is covered with a yellow blanket and a red blanket. To the left of the bed is a wooden table with a chair tucked under it. On the table, there are various items including a blue pitcher and a book. A small framed picture hangs on the wall above the table. On the right wall, several other framed pictures are hanging at different angles. The floor is made of wooden planks. The overall style is characteristic of Van Gogh's work, with visible brushstrokes and a strong use of color.

THE BEDROOM

This is one of three paintings in a series entitled Bedroom in Arles. This image depicts his bedroom when he lived in Arles, Bouches-du-Rhone, France. This painting was made in 1888. It's an oil painting on a canvas. Currently it is on display at the Van Gogh Museum in Amsterdam.



VIEW OF PARIS FROM MONTMARTRE

The View of Paris from Montmartre is a part of the Montmartre paintings made in 1886 and 1887. At this point Van Gogh has embraced the use of color and light. This painting can be found at the Van Gogh Museum in Amsterdam.

VASE WITH TWELVE SUNFLOWERS



This painting is one of two of Van Gogh's series of still life paintings. This particularly famous image was painted in 1888 while he was in Arles. This painting is an oil on canvas. It is currently on display at the National Gallery in London, UK.



CAFE TERRACE AT NIGHT

Painted in 1888 this painting is also known as The Cafe Terrace on the Place du Forum. It depicts a cafe in Arles, France. Currently, it is on display at the Kroller-Muller Museum in Otterlo, Netherlands.

The painting 'Starry Night Over the Rhone' by Vincent van Gogh depicts a night scene of a river in Arles, France. The sky is a deep, dark blue, filled with numerous bright, yellow stars and a crescent moon. The stars have a soft, glowing aura. The river in the foreground is dark, with the lights from the stars and the moon reflecting on its surface. On the left bank, there are several buildings, including a church with a tall, dark spire. The overall mood is serene and contemplative, capturing the beauty of a night sky over a quiet town.

STARRY NIGHT OVER THE RHONE

Painted in 1888, *Starry Night Over the Rhone* is one of Van Gogh's paintings of Arles, France at nighttime. It depicts the river that was only a few short minutes walk from his house at the asylum. Today it is on display at the Musee d'Orsay in Paris, France.

THE LANGLOIS BRIDGE AT ARLES

The bridge is the subject of nine of Van Gogh's pieces of artwork. Made in 1888, they were created when he lived in Arles, France. The drawbridge reminded him of his home in the Netherlands. It is currently on display at the Wallraf-Richartz Museum in Cologne, Germany.



THATCHED HOUSES AGAINST A HILL

This painting was made in 1890 in Saint-remy-de-provence, France. It is one of five paintings in a series of landscape canvases. It is part of the scene that he saw between the bars of his asylum window. It is currently on display at the Tate Gallery in London, UK.