

**Ο χρόνος Present Continuous**

Τον **Present Continuous** τον χρησιμοποιούμε όταν θέλουμε να μιλήσουμε για κάτι που κάνουμε τώρα, τη στιγμή που μιλάμε. Σχηματίζεται με τις λέξεις **am, are, is** (το ρήμα **to be**) και το ρήμα (τη λέξη που δείχνει τι κάνουμε) στο οποίο προσθέτουμε την κατάληξη **-ing**. Δες πώς κλίνεται το ρήμα **play** στον **Present Continuous**:

Affirmative	Negative		Interrogative
	Long form	Short form	
I am playing	I am not playing	I'm not playing	Am I playing?
You are playing	You are not playing	You aren't playing	Are you playing?
He is playing	He is not playing	He isn't playing	Is he playing?
She is playing	She is not playing	She isn't playing	Is she playing?
It is playing	It is not playing	It isn't playing	Is it playing?
We are playing	We are not playing	We aren't playing	Are we playing?
You are playing	You are not playing	You aren't playing	Are you playing?
They are playing	They are not playing	They aren't playing	Are they playing?

**Η ορθογραφία των ρημάτων όταν προσθέτουμε την κατάληξη -ing**

Κάποια ρήματα αλλιάζουν την ορθογραφία τους, όταν τους προσθέτουμε την κατάληξη **-ing**. Δες παρακάτω τις περιπτώσεις όπου υπάρχουν αλλαγές στην ορθογραφία:

1. Τα ρήματα που τελειώνουν σε **-e** το βγάζουν πριν προσθέσουν το **-ing**:  
π.χ. *come-coming, have-having*
2. Τα ρήματα που τελειώνουν σε σύμφωνο (εκτός από το **-x**) και πριν από αυτό υπάρχει φωνήεν μονό και τονισμένο διπλασιάζουν το τελικό σύμφωνο πριν προσθέσουν το **-ing**:  
π.χ. *run-running, set-setting, begin-beginning*
3. Τα ρήματα που τελειώνουν σε **-c, -g, -l, -m, -p** και πριν από αυτό υπάρχει φωνήεν μονό διπλασιάζουν το τελικό σύμφωνο πριν προσθέσουν το **-ing** (το **-c** γίνεται **-ck**):  
π.χ. *travel-travelling, panic-panicking*
4. Τα ρήματα που τελειώνουν σε **-ie**, το αλλιάζουν σε **-y** πριν προσθέσουν το **-ing**:  
π.χ. *lie-lying*

**Η σχέση ανάμεσα στους χρόνους Present Simple-Present Continuous**

Χρησιμοποιούμε τον **Present Simple** για να μιλήσουμε για κάτι που ισχύει για πάντα, κάτι μόνιμο, ενώ χρησιμοποιούμε τον **Present Continuous** για να μιλήσουμε για κάτι που γίνεται τώρα, κάτι προσωρινό: π.χ. *Every Tuesday Amy sets the table, but this Tuesday Andrew is setting the table.*

Δες τον παρακάτω πίνακα για να μάθεις πώς θα ξεχωρίζεις τους δύο χρόνους:

	PRESENT SIMPLE	PRESENT CONTINUOUS
Σχηματισμός (τι πρέπει να προσέξω)	<ul style="list-style-type: none"> <li>✓ -s, -es στο 3ο πρ. εν.</li> <li>✓ do, does στην ερώτηση και την άρνηση</li> </ul>	<ul style="list-style-type: none"> <li>✓ ρήμα to be (am, are, is)</li> <li>✓ το ρήμα με την κατάληξη -ing</li> </ul>
Χρήση (τι πρέπει να θυμάμαι όταν θέλω να αποφασίσω ποιο χρόνο θα χρησιμοποιήσω)	<ul style="list-style-type: none"> <li>✓ χρησιμοποιείται για να μιλήσουμε για μόνιμες καταστάσεις</li> <li>✓ χρησιμοποιείται για να μιλήσουμε για έθιμα ή προσωπικές συνήθειες μας</li> </ul>	<ul style="list-style-type: none"> <li>✓ χρησιμοποιείται για να μιλήσουμε για αυτό που γίνεται τώρα, σήμερα, αυτή την εποχή, με λίγα λόγια, για κάτι προσωρινό</li> </ul>
Χαρακτηριστικές λέξεις που συνήθως «πάνε παρέα» με τον κάθε χρόνο	<ul style="list-style-type: none"> <li>✓ επιρρήματα συχνότητας (π.χ. always, never, often, sometimes...)</li> <li>✓ εκφράσεις με το every (every week, every Thursday)</li> <li>✓ once, twice, three times, four times...</li> </ul>	<ul style="list-style-type: none"> <li>✓ now, at the moment, today, at present</li> <li>✓ this (week, month, year, September)</li> <li>✓ it's (two o'clock)</li> <li>✓ Look!/Listen!/Wait!/Stop! (επιφωνήματα)</li> </ul>

## Ασκήσεις

### St. James' Hospital



1

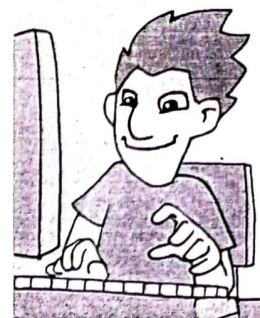
Put the verbs in brackets into the Present Continuous or Present Simple.

This is St. James' Hospital. The doctor usually examines (examine) patients and the nurse sometimes \_\_\_\_\_ (take) temperatures.

Visitors never \_\_\_\_\_ (come) in the morning. They always \_\_\_\_\_ (visit) patients at 6 o'clock. It's 2 o'clock now. The doctor \_\_\_\_\_ (sit). The nurse \_\_\_\_\_ (write). The patients \_\_\_\_\_ (have) lunch.

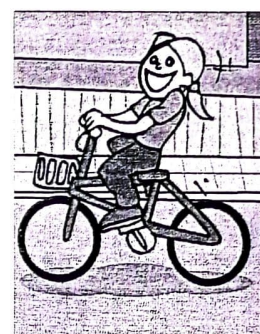
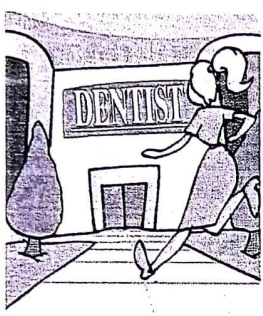
They always \_\_\_\_\_ (have) lunch at 2 o'clock.

2 Look and write what the people usually do on Saturday morning and what they are doing now, as in the example.



1 visit her friends / travel to Oxford  
Sandy usually visits her friends on \_\_\_\_\_  
Saturday morning but she is travelling  
to Oxford now.

2 clean his room / write e-mails  
Henry \_\_\_\_\_  
\_\_\_\_\_



3 go shopping / go to the dentist  
Elizabeth \_\_\_\_\_  
\_\_\_\_\_

4 play basketball / ride her bike  
Vicky \_\_\_\_\_  
\_\_\_\_\_

3 Complete with the Present Simple or the Present Progressive.

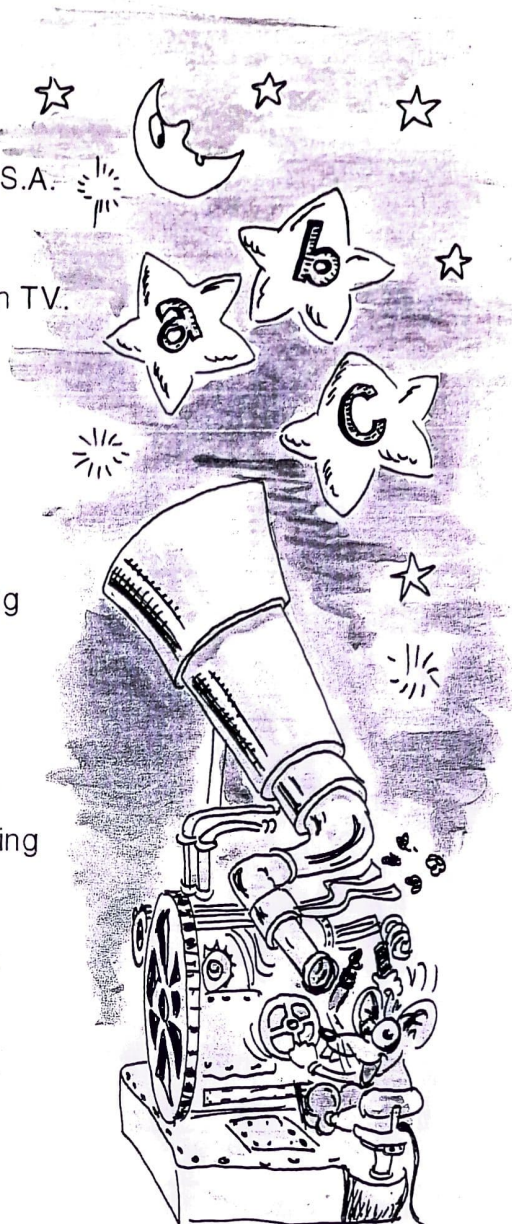
Tom is a farmer and he's got lots of work to do every day.  
He (1) \_\_\_\_\_ (get up) at 5 o'clock every  
morning and (2) \_\_\_\_\_ (have) a big breakfast.  
Then, he (3) \_\_\_\_\_ (feed) all the animals on the  
farm.

At the moment, Tom (4) \_\_\_\_\_ (not do) any  
work. He's in his bedroom. He (5) \_\_\_\_\_ (wear) his  
pyjamas and he (6) \_\_\_\_\_ (read) a newspaper.

Tom (7) \_\_\_\_\_ (love) living on the farm, but  
he (8) \_\_\_\_\_ (not like) getting up early in the  
morning.

## 4 Choose the correct answer and complete.

- Look! It is raining outside!
  - rains
  - is raining
  - are raining
- I always \_\_\_\_\_ letters to my aunt in the U.S.A.
  - am sending
  - sending
  - send
- Amanda \_\_\_\_\_ like watching quiz shows on TV.
  - doesn't
  - isn't
  - not
- \_\_\_\_\_ to Mexico every summer?
  - Does they go
  - Are they going
  - Do they go
- Sam and I \_\_\_\_\_ at the moment.
  - don't study
  - aren't studying
  - don't studying
- Flowers \_\_\_\_\_ nice in spring.
  - smell
  - smells
  - are smelling
- \_\_\_\_\_ with the computer now? No, I'm not.
  - You are playing
  - Do you play
  - Are you playing
- My friend never \_\_\_\_\_ wine.
  - drinks
  - is drinking
  - doesn't drink
- Rich people usually \_\_\_\_\_ big cars.
  - are driving
  - is driving
  - drive
- The cat \_\_\_\_\_ on the bed.
  - isn't jump
  - is jumping
  - jump



## 5 Choose a or b.

- Do you always \_\_\_\_\_ your teeth before you go to bed?
  - brushing
  - brush
- Kathy \_\_\_\_\_ her dog for a walk at the moment.
  - is taking
  - takes
- I \_\_\_\_\_ walking to school every day.
  - hate
  - am hating
- The mechanic \_\_\_\_\_ in the garden now. He's fixing the car.
  - doesn't sit
  - isn't sitting
- \_\_\_\_\_ on the board at the moment?
  - Does the teacher write
  - Is the teacher writing
- Helen \_\_\_\_\_ to become an artist.
  - wants
  - is wanting
- Jack \_\_\_\_\_ chocolate.
  - doesn't like
  - isn't liking