

Road Safety Question Cards

1. What is the crossing-patrol (lollipop) person's job?



twinkl.com

Road Safety Question Cards

2. Why is it very important to walk straight across, and not run, when crossing a road?



twinkl.com

Road Safety Question Cards

3. Always wear a seatbelt if there is one. Can you think of three vehicles which have seat belts?



twinkl.com

Road Safety Question Cards

4. The lollipop sign says, 'Stop'. Who is it telling to stop?



twinkl.com

Road Safety Question Cards

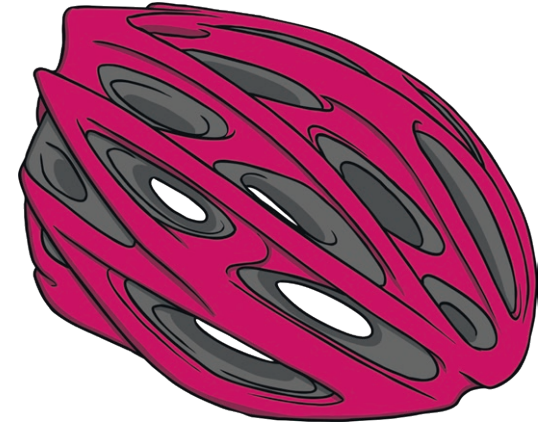
5. What does this traffic sign warn drivers about?



twinkl.com

Road Safety Question Cards

6. Why should you wear a helmet when you ride your bicycle?



twinkl.com

Road Safety Question Cards

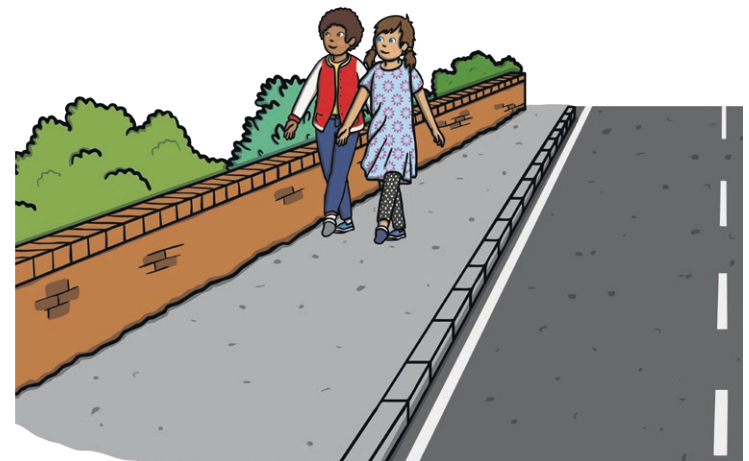
7. Why has the car stopped?



twinkl.com

Road Safety Question Cards

8. What are people who are walking near roads called?



twinkl.com

Road Safety Question Cards

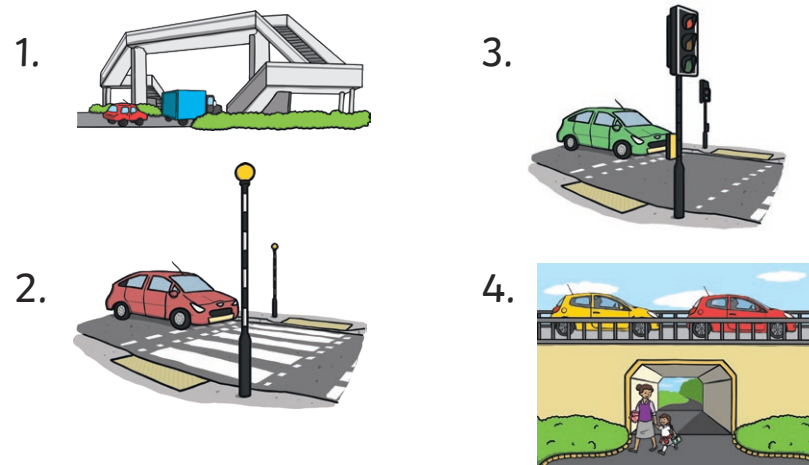
9. Can you remember the Green Cross Code? Here are some clues:

1. Find a...
2. Stop...
3. Look...
4. If traffic is...
5. When it is...



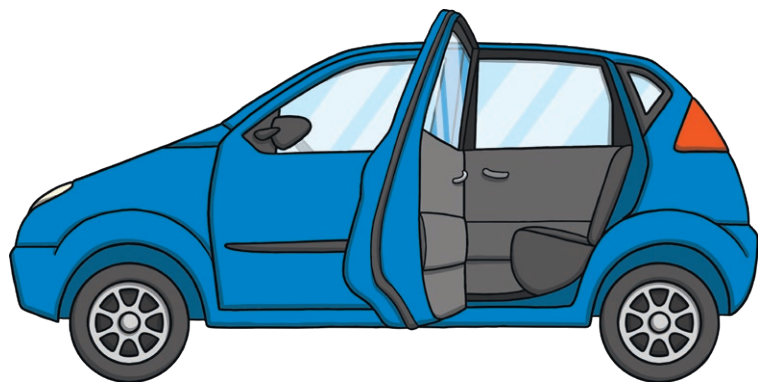
Road Safety Question Cards

10. Here are four more safe places to cross a road. Do you know what they are all called?



Road Safety Question Cards

11. Which side should children get in or out of a car: the pavement side or the road side? Why?



Road Safety Question Cards

12. What would you say to this person to help them cross the road more safely?

